



# Arrowhead-Weston Transmission Project COMMUNITY news

## Construction begins

American Transmission Company has made great progress on the Arrowhead-Weston transmission project during the past few months. In Minnesota, all land easements have been acquired, three-quarters of the foundations have been installed and poles are being erected. In Wisconsin, we have acquired more than 150 easements in Clark and Marathon counties and have reached an agreement with Marathon County on an easement for the use of county-owned land.

**Each of these steps brings us closer to improving our fragile infrastructure and providing the safe and reliable electricity Wisconsin homes and businesses need.**

Each of these steps brings us closer to improving our fragile infrastructure and providing the safe and reliable electricity Wisconsin homes and businesses need. The Arrowhead-Weston line is a vital part of our commitment to strengthening Wisconsin's power grid. We will continue to work with landowners, elected officials, regulators and utilities as we continue to maintain and upgrade our electric transmission system.

If you have any questions, please call us at 866.899.3204, ext. 6775 or visit us online at [www.arrowhead-weston.com](http://www.arrowhead-weston.com).



## Arrowhead-Weston Transmission Project

## PLEASE TALK TO US!

The process of planning, locating, building and maintaining transmission lines is not American Transmission Company's alone. Landowners, local communities, elected officials and utility companies are all involved in the dialogue about how best to provide reliable, affordable and safe energy – when and where it's needed. If you have questions or comments, please contact us:

**American Transmission Company**  
Toll Free 866.899.3204, ext. 6775  
[www.atcllc.com](http://www.atcllc.com)



### inside

- Construction begins .....1
- Working with landowners .....2
- Project map .....3
- Project updates .....3
- Our commitment to the environment .....3
- Property payments .....4
- The need for transmission in Wisconsin .....5

## Working with landowners



When constructing a transmission line that requires access to private landowners' property, ATC must obtain a right-of-way by purchasing an easement from the landowner on whose property the power line will be placed. An easement is established through negotiation between ATC and private landowners based on the appraised value of the area needed for the transmission project. Despite earnest negotiations, it is possible that a landowner and public utility may not reach an agreement. Under these circumstances, the utility has the right to condemn the easement using the legal right of eminent domain.

ATC has already secured 150 easements in Marathon and Clark counties and will continue to meet with landowners along the project route to:

- survey the property, and
- develop engineering specifications, including number of poles needed, location and height of each pole, the amount of right-of-way needed and the access points to the right-of-way.

ATC will work closely with landowners to schedule time to survey property. We will also keep landowners informed about survey work and determined engineering specifications. We will determine a fair and reasonable price for the land and if requested by the landowner, ATC will pay for an independent third-party appraisal of

landowners' property. ATC will also pay to restore the property to its original condition and compensate landowners for any crop or physical damages that may occur during construction or routine maintenance. Payment for crop damages is based upon current market prices and expected yields.

The municipalities, counties and units of government that own land through which the line will pass will also receive payments for the use of their land, in addition to environmental impact and annual fees already prescribed by law.

- An easement of approximately three acres was acquired from the Marathon School District on May 12, 2004.
- The Marathon County Board granted an easement on 1.6 miles of county-owned land on Aug. 24, 2004.
- The Department of Natural Resources granted an easement of 1.2 miles in Clark County in Nov. 2004.

Easement payments made to counties and municipalities can be used for any purpose. Construction in Wisconsin is expected to begin in late 2004 or early 2005.

If you have questions concerning easements and condemnation, please contact us toll-free at 866.899.3204, ext.6775.

## Work schedule

Counties	Begin Land owner Contact & Right-of-Way Acquisition	Begin Construction
Marathon	Current	March-05
Clark	Current	June-05
Taylor, Chippewa	Nov-04	Nov-05
Rusk	Feb-05	Nov-05
Sawyer	Mar-05	Jan-06
Washburn	Dec-05	Sep-06
Douglas	May-06	Feb-07

## The need for the Arrowhead-Weston line and transmission in Wisconsin

Independent experts recognize Wisconsin's need for the Arrowhead-Weston transmission line:

"Wisconsin's transmission system continues to be highly constrained as to its ability to transport power into and within the state ... Due to concerns over electric system reliability, the Commission reauthorized construction of the 210-mile, \$420 million Arrowhead-Weston transmission line in 2003."

*Wisconsin's Strategic Energy Assessment, Energy 2010, Final Report, September 2004*

"Wisconsin stands at a crossroads today on energy issues and we must plan for our future. We are faced with the need to build more power plants and transmission lines for our homes, our factories, our farms, and our schools."

*Governor Jim Doyle, June 2004*

"The state and American Transmission Co., which manages the state's power distribution, must act to keep up with demand and to reduce the risk of power outages ... Wisconsin needs to get the power to consumers more safely and efficiently. When the time comes, let's adopt Marathon County's practical outlook and cooperate with power expansion plans, not obstruct them."

*Wisconsin State Journal, June 2004*

"The Arrowhead-Weston line is vitally important to everyone who lives, works and does business in this part of the state."

*Wausau/Marathon County Chamber of Commerce, August 2004*

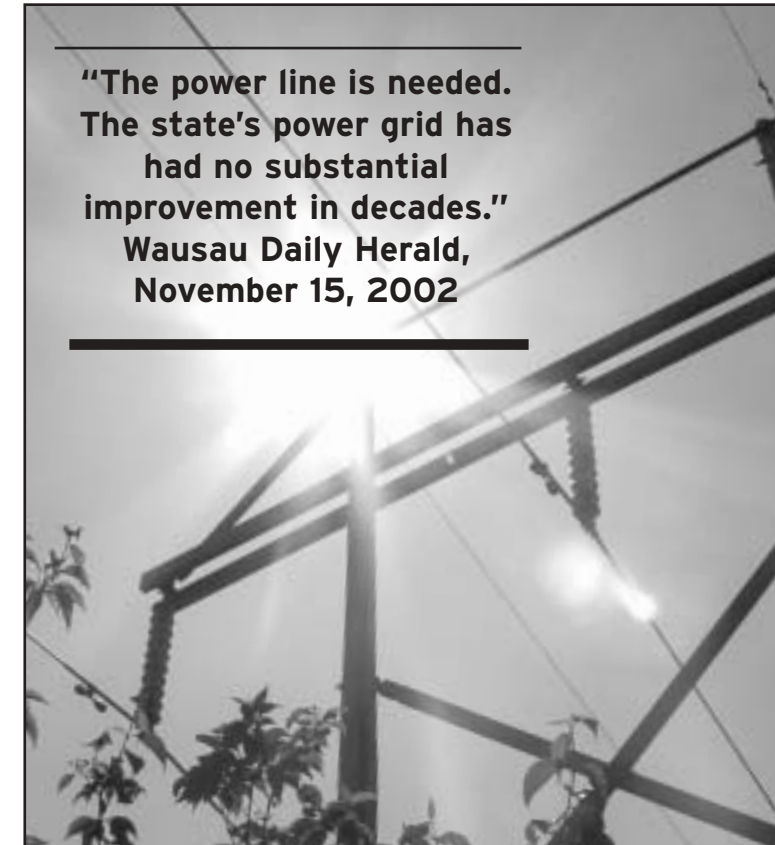
"The reliability of Wisconsin's power grid isn't guaranteed, thanks to a two-decade hiatus from building power plants and power lines to keep up with growing demand."

*Public Service Strategic Energy Assessment Report, Public Service Commission of Wisconsin, December 2003*

"The power line is needed. The state's power grid has had no substantial improvement in decades."

*Wausau Daily Herald, November 15, 2002*

**"The power line is needed. The state's power grid has had no substantial improvement in decades."  
Wausau Daily Herald,  
November 15, 2002**



## Our commitment to the environment

ATC is committed to providing safe, reliable and affordable electricity while protecting and preserving environmentally sensitive areas. Siting and building transmission lines have potential impacts on the environment, wildlife and agriculture. We seek to minimize impact to the environment by:



- Conducting comprehensive assessments of sensitive natural and agricultural resources in project areas,
- Working with state regulators and environmental organizations to evaluate any potential environmental impacts,
- Complying with all state and federal laws that regulate construction practices,
- Restoring affected lands after construction, and
- Working with landowners to develop appropriate landscaping practices in the transmission corridor.

ATC respects the people and land affected by our projects and will continue to work with landowners and their communities to meet energy needs and protect natural resources.

## Wetland/waterway permits

Applications for crossing navigable waters and working in wetlands have been submitted to the Wisconsin Department of Natural Resources and the US Army Corps of Engineers. ATC has been working with these agencies to identify Best Management Practice to minimize environmental impacts during construction. Both agencies held public hearings to gather information to be considered in the development of the permit. The Corps held a public hearing Aug. 19 in Hayward and the DNR held public informational hearings November 10 and 11 in Solon Springs and Mosinee. Issuance of the Corps permit is expected in early 2005, and the DNR permit is expected to be issued this year.

## Namekagon River crossing

ATC, Minnesota Power, and WPSC submitted a request to the National Park Service to cross the Namekagon River, a Federal Wild and Scenic River, in November 2001. The river crossing is approximately 10 miles downstream of Hayward, where an Xcel transmission line, a railroad, and two Enbridge pipelines currently cross the river. In its March 2004 Draft Environmental Impact Statement, NPS chose the long span conductor as their preferred alternative. With structures set back farther from the river and fewer wires, the long span option would have less visual impact than the other alternatives. A final decision from the Park Service is expected this year, with the actual permit issued in early 2005.

## Permanent Stone Lake Substation

ATC has notified the Public Service Commission that the substation at Stone Lake will be permanent. As noted in the PSC's December 2003 order, to make the substation permanent, ATC must submit a notification that contains an explanation of the purpose and reason for retaining the expansion as permanent. ATC does not need to file a Certificate of Public Convenience and Necessity or a Construction Application with the PSC.

The substation was originally a temporary structure built to provide electricity to the area during the line construction north of Stone Lake. ATC believes that it is necessary to make the substation permanent to provide continued transmission system benefits when the new transmission line is placed in service. The substation will improve the overall performance and operational flexibility of the Northwest Wisconsin transmission system.

## Construction and mitigation plans

The PSCW October 2001 order requires that a Construction and Mitigation Plan be developed for the Arrowhead-Weston project. This plan will have two parts with the first part or Part A concerning construction and mitigation practices of general applicability. This has been submitted to and approved by the Public Service Commission of Wisconsin. The second part of the plan or Part B will be developed for each of the

eight construction segments of the project. Part B will address site-specific construction and mitigation measures needed to protect sensitive resources, such as archaeological sites, wetlands, and wildlife. Part B plans also will be submitted to the PSCW for approval prior to commencement of construction on a particular segment. The first of these site-specific plans, or Part Bs, was submitted to the PSCW in October, for work in Clark and Marathon counties.



## Amount to be paid to your community

One-time environmental and annual impact payments will be made at the start of construction. Both the one-time and annual payments are estimates based on the amount of land crossed in each county and each municipality in the county.

### Chippewa County

#### One-Time Environmental Impact Payment

Chippewa County	\$100,144
Ruby	\$100,144

#### Annual Impact Payments

Chippewa County	\$6,009
Ruby	\$6,009

### Clark County

#### One-Time Environmental Impact Payment

Clark County	\$982,186
Colby	\$231,103
Green Grove	\$231,102
Hixon	\$238,806
Longwood	\$281,175

#### Annual Impact Payments

Clark County	\$58,931
Colby	\$13,866
Green Grove	\$13,867
Hixon	\$14,328
Longwood	\$16,870

### Douglas County

#### One-Time Environmental Impact Payment

Douglas County	\$1,791,045
Bennett	\$219,547
Gordon	\$211,844
Hawthorne	\$30,814
Oakland	\$269,620
Oliver	\$61,627
Parkland	\$258,065
Solon Springs	\$304,285
Superior	\$223,399
Wascott	\$211,844

#### Annual Impact Payments

Douglas County	\$107,463
Bennett	\$13,173
Gordon	\$12,711
Hawthorne	\$1,849
Oakland	\$16,177
Oliver	\$3,698
Parkland	\$15,484
Solon Springs	\$18,257
Superior	\$13,404
Wascott	\$12,710

### Marathon County

#### One-Time Environmental Impact Payment

Marathon County	\$1,479,056
Abbotsford	\$34,665
Cassel	\$173,327
Emmet	\$165,623
Frankfort	\$227,251
Hull	\$196,437
Mosinee	\$319,692
Rib Mountain	\$69,331
Wien	\$292,730

#### Annual Impact Payments

Marathon County	\$88,743
Abbotsford	\$2,080
Cassel	\$10,400
Emmet	\$9,937
Frankfort	\$13,635
Hull	\$11,786
Mosinee	\$19,181
Rib Mountain	\$4,160
Wien	\$17,564

### Rusk County

#### One-Time Environmental Impact Payment

Rusk County	\$1,116,995
Flambeau	\$119,403
Grant	\$300,433
Hubbard	\$88,589
Marshal	\$281,175
Murry	\$184,882
Thornapple	\$134,810
Willard	\$7,703

#### Annual Impact Payments

Rusk County	\$67,020
Flambeau	\$7,164
Grant	\$18,026
Hubbard	\$5,315
Marshal	\$16,871
Murry	\$11,093
Thornapple	\$8,089
Willard	\$462

### Sawyer County

#### One-Time Environmental Impact Payment

Sawyer County	\$986,038
Bass Lake	\$119,403
Couderay	\$161,772
Edgewater	\$38,517
Meteor	\$215,696
Sand Lake	\$389,023
Weirgor	\$61,627

#### Annual Impact Payments

Sawyer County	\$59,162
Bass Lake	\$7,164
Couderay	\$9,706
Edgewater	\$2,311
Meteor	\$12,942
Sand Lake	\$23,341
Weirgor	\$3,698

### Taylor County

#### One-Time Environmental Impact Payment

Taylor County	\$805,007
Aurora	\$207,992
Ford	\$96,293
Lublin	\$30,814
Maplehurst	\$11,555
Pershing	\$188,734
Roosevelt	\$269,619

#### Annual Impact Payments

Taylor County	\$48,300
Aurora	\$12,479
Ford	\$5,778
Lublin	\$1,849
Maplehurst	\$693
Pershing	\$11,324
Roosevelt	\$16,177

### Washburn County

#### One-Time Environmental Impact Payment

Washburn County	\$731,825
Bass Lake	\$200,289
Frog Creek	\$265,768
Stinnett	\$265,768

#### Annual Impact Payments

Washburn County	\$43,909
Bass Lake	\$12,017
Frog Creek	\$15,946
Stinnett	\$15,946